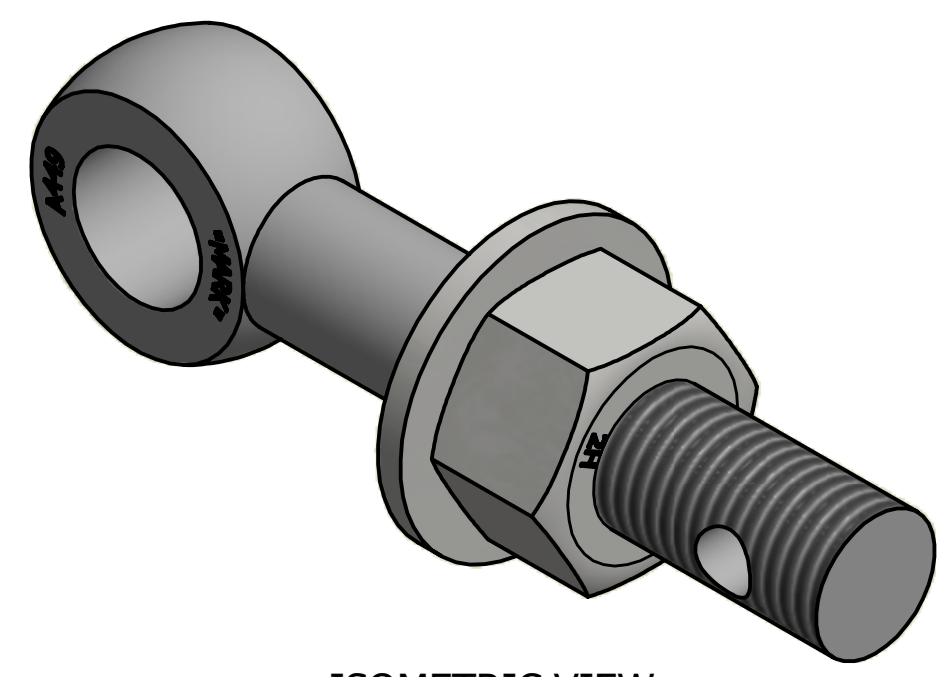
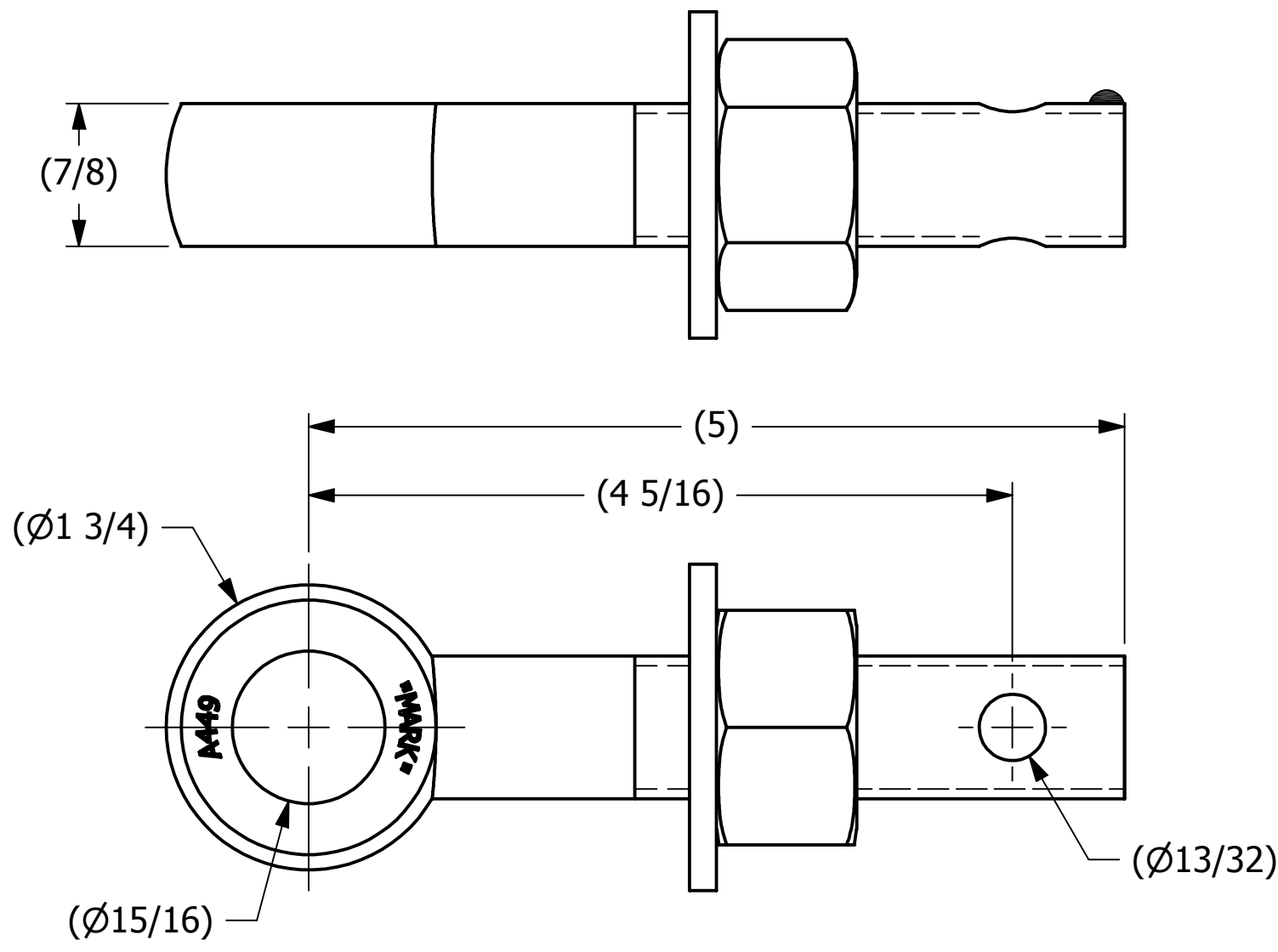


SALES DRAWING

SALES DRAWING



ISOMETRIC VIEW

- NOTES:
1. JET LUBE(PFPE GREASE) APPLIED TO WORKING THREAD AREA, THE BOTTOM FACE OF THE NUT, AND THE TOP FACE OF THE WASHER. THEN APPLY THREAD PROTECTION.
 2. BOLT STRENGTH EQUIVALENT TO SAE J429 GRADE 5.
 3. WASHER IS ASTM F436 HARDENED.

THIS PRINT, PROPERTY OF SALCO PRODUCTS INC., CONTAINS PROPRIETARY INFORMATION AND MUST NOT BE COPIED, REPRODUCED, OR USED DETRIMENTALLY TO OUR INTEREST.

| REV | BY | DATE | DESCRIPTION |
|-----|-----|----------|-------------------------------|
| B | RJP | 11-16-15 | UPDATED MARKING & TITLE BLOCK |
| A | CHL | 4-11-07 | NEW PART ADDED TO SYSTEM |

| | | | |
|---|-------|-----------------------------|------------|
| UNLESS OTHERWISE SPECIFIED DIMENSIONAL TOLERANCES | | DRAWN BY: | CHL |
| FRACTIONAL: | ±1/16 | CHECKED BY: | ACC |
| X.XX: | ±.03 | PROTOTYPE BY: | CHL |
| X.XXX: | ±.015 | PROTOTYPE DATE: | 10/16/2006 |
| ANGULAR: | ±1° | APPROVED FOR PRODUCTION BY: | ACC |
| DEBURR ALL SHARP EDGES. ALL MACHINED SURFACES TO HAVE A 125 RMS FINISH UNLESS NOTED OTHERWISE. | | PRODUCTION DATE: | 4/11/2007 |
| THIRD ANGLE PROJECTION | | | |

| | | | |
|---|---------|--------------------|--------|
| SALCO PRODUCTS, INC. | | | |
| PART NAME: EYEBOLT ASSEMBLY 7/8"X5" | | | |
| MATERIAL: CARBON STEEL, ASTM A449 TYPE 1 | | | |
| PROJECT #: | WAG0365 | SHEET #: | 1 OF 1 |
| DRAWING #: | | PART #: | |
| B22653 | | EB785XHAG5L | |
| SCALE: 1:1 | | | |